

## 2 T800 Memory PCB

This section contains the following information.

<b>IPN</b>	<b>Section</b>	<b>Page</b>
<b>220-01144-00</b>	Parts List	2.2
	Mechanical & Miscellaneous Parts	2.2
	PCB Layout - Top Side	2.3
	PCB Layout - Bottom Side	2.4
	Circuit Diagram	2.5

## T800 Memory PCB Parts List (IPN 220-01144-00)

### How To Use This Parts List

The components listed in this parts list are divided into two main types: those with a circuit reference (e.g. C2, D1, R121, etc) and those without (miscellaneous and mechanical).

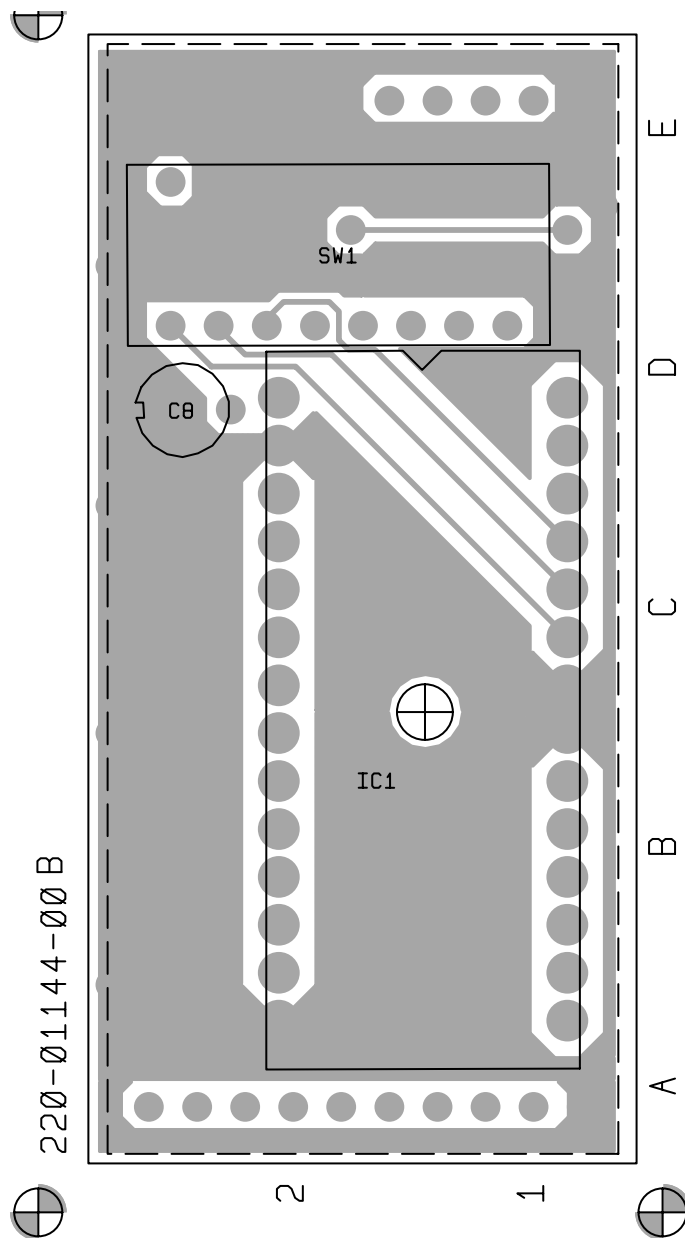
Those with a circuit reference are grouped in alphabetical order and then in numerical order within each group. Each component entry comprises three or four columns: the circuit reference, variant (if applicable), IPN and description. A number in the variant column indicates that this is a variant component which is fitted only to the product type listed.

The miscellaneous and mechanical section lists the variant and common parts in IPN order.

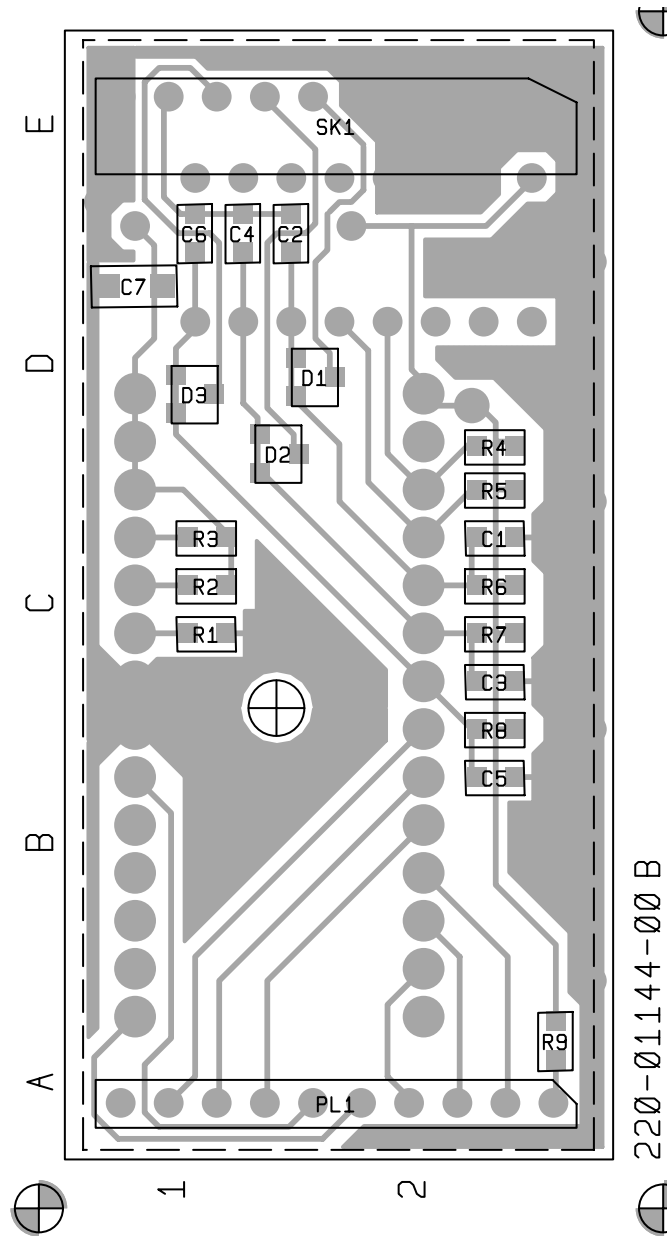
### Parts List Amendments

There were no amendments to the parts list at the time of publication.

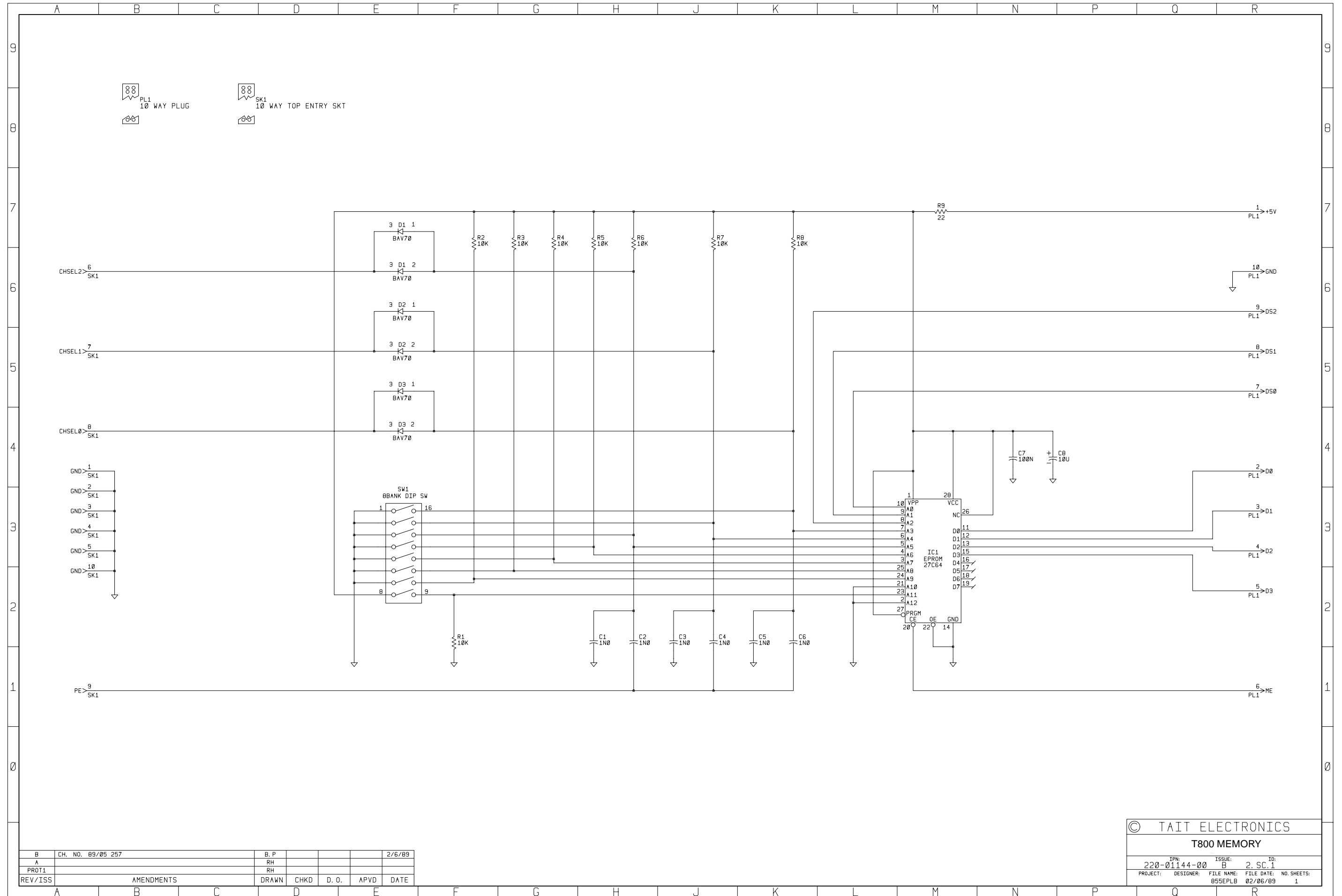
Ref	Var	IPN	Description	Ref	Var	IPN	Description
C1		015-24100-08	CAP CER 0805 CHIP 1N 10% X7R 50V				
C2		015-24100-08	CAP CER 0805 CHIP 1N 10% X7R 50V				
C3		015-24100-08	CAP CER 0805 CHIP 1N 10% X7R 50V				
C4		015-24100-08	CAP CER 0805 CHIP 1N 10% X7R 50V				
C5		015-24100-08	CAP CER 0805 CHIP 1N 10% X7R 50V				
C6		015-24100-08	CAP CER 0805 CHIP 1N 10% X7R 50V				
C7		015-06100-08	CAP CER 1206 CHIP 100N 10% X7R 50V				
C8		025-08100-02	CAP TANT BEAD 10M 10% 16V				
D1		001-10000-70	(S) DIODE SMD BAV70 DUAL SW SOT-23 COM-CATH				
D2		001-10000-70	(S) DIODE SMD BAV70 DUAL SW SOT-23 CO CATH				
D3		001-10000-70	(S) DIODE SMD BAV70 DUAL SW SOT-23 COM CATH				
IC1		002-00018-04	(S) IC 27C64 CMOS 8K*8 UV EPROM 250NS - 150NS				
PL1		240-00020-57	HEADER 10 WAY 1 ROW PCB MTG				
R1		036-15100-00	RES M/F 0805 CHIP 10K 5%				
R2		036-15100-00	RES M/F 0805 CHIP 10K 5%				
R3		036-15100-00	RES M/F 0805 CHIP 10K 5%				
R4		036-15100-00	RES M/F 0805 CHIP 10K 5%				
R5		036-15100-00	RES M/F 0805 CHIP 10K 5%				
R6		036-15100-00	RES M/F 0805 CHIP 10K 5%				
R7		036-15100-00	RES M/F 0805 CHIP 10K 5%				
R8		036-15100-00	RES M/F 0805 CHIP 10K 5%				
R9		036-12220-00	RES M/F 0805 CHIP 22E 5%				
SW1		230-00010-19	SWITCH*8 SPST DIP PKG				
SKT1		240-04020-57	SKT 10 WAY 1ROW PCB MTG TOP ENTRY				
		220-01144-00	PCB T855/856/857 MEM				
		240-04020-35	SKT 28 PIN DIL IC LO PROF IC1				
		365-00011-38	LABEL STATIC WARNING YELLOW A4A315				
		365-00011-54	LABEL WHITE RW1556/2 SPECIAL ADHESIVE				
		399-00010-86	BAG STATIC SHIELDING 127X203MM				
		410-00010-64	PKG HEADER CARD A3M2392				



T800 Memory PCB (IPN 220-01144-00) - Top Side



T800 Memory PCB (IPN 220-01144-00) - Bottom Side



B	CH. NO. 09/05 257	B. P			2/6/89
A		RH			
PROT1		RH			
REV/ISS	AMENDMENTS	DRAWN	CHKD	D. O.	APVD DATE

© TAIT ELECTRONICS					
T800 MEMORY					
IPN:	220-01144-00	ISSUE:	B	SC:	1
PROJECT:	DESIGNER:	FILE NAME:	FILE DATE:	NO. SHEETS:	
		855EPLB	02/06/89	1	

